

Printen maken volgens de “TonerTransfer-Methode”

Bart PA2BV
PA2BV@amsat.org

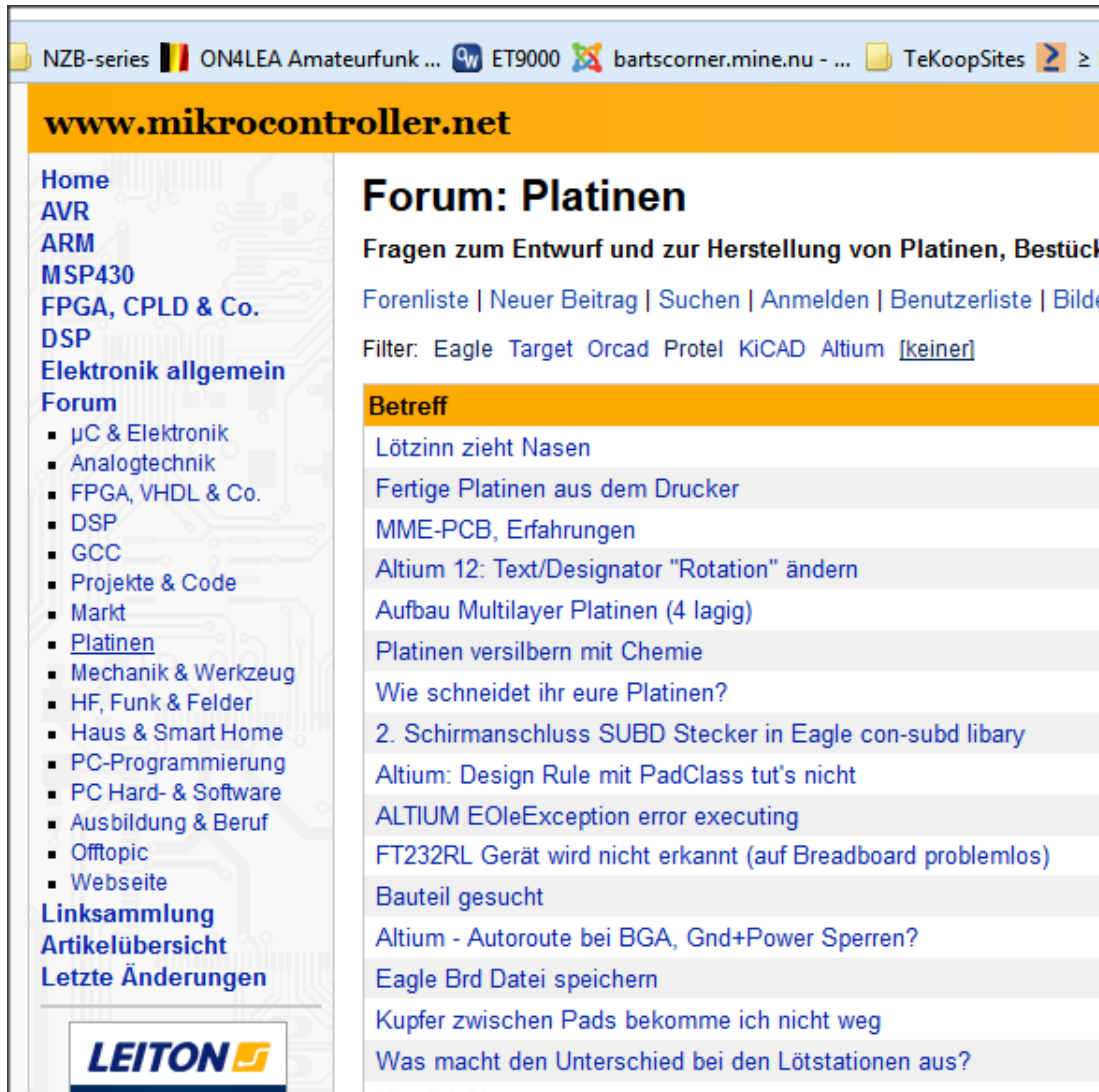
PrintLayout

Veel software beschikbaar

- Eagle – Demoversie 8x10 cm <http://www.cadsoftusa.com/>
- Kicad – open source - <http://www.kicad-pcb.org>
- Target 3001 – www.pcb-distrilec.com
- DesignSpark – gratis - www.designspark.com

- Altium Designer
- Proteus
- Cadstar
- Mentor PADS
- OrCAD
- MultiSim&Ultiboard (NI)
- Microcap
- Abacom SprintLayout

Mikrocontroller.Net



The screenshot shows the website www.mikrocontroller.net. The browser's address bar displays the URL. The page features a navigation menu on the left with categories like Home, AVR, ARM, MSP430, FPGA, CPLD & Co., DSP, and Elektroniek allgemein. The main content area is titled 'Forum: Platinen' and includes a search filter for software tools like Eagle, Target, Orcad, Protel, KiCAD, and Altium. A list of forum threads is displayed, with the first one being 'Lötzinn zieht Nasen'.

www.mikrocontroller.net

Home
AVR
ARM
MSP430
FPGA, CPLD & Co.
DSP
Elektroniek allgemein
Forum

- µC & Elektronik
- Analogtechnik
- FPGA, VHDL & Co.
- DSP
- GCC
- Projekte & Code
- Markt
- Platinen
- Mechanik & Werkzeug
- HF, Funk & Felder
- Haus & Smart Home
- PC-Programmierung
- PC Hard- & Software
- Ausbildung & Beruf
- Offtopic
- Webseite

Linksammlung
Artikelübersicht
Letzte Änderungen

LEITON

Forum: Platinen

Fragen zum Entwurf und zur Herstellung von Platinen, Bestück

Forenliste | Neuer Beitrag | Suchen | Anmelden | Benutzerliste | Bilde

Filter: Eagle Target Orcad Protel KiCAD Altium [\[keiner\]](#)

Betreff

- Lötzinn zieht Nasen
- Fertige Platinen aus dem Drucker
- MME-PCB, Erfahrungen
- Altium 12: Text/Designator "Rotation" ändern
- Aufbau Multilayer Platinen (4 lagig)
- Platinen versilbern mit Chemie
- Wie schneidet ihr eure Platinen?
- 2. Schirmanschluss SUBD Stecker in Eagle con-subd library
- Altium: Design Rule mit PadClass tut's nicht
- ALTIUM EOIException error executing
- FT232RL Gerät wird nicht erkannt (auf Breadboard problemlos)
- Bauteil gesucht
- Altium - Autoroute bei BGA, Gnd+Power Sperren?
- Eagle Brd Datei speichern
- Kupfer zwischen Pads bekomme ich nicht weg
- Was macht den Unterschied bei den Lötstationen aus?

- Uitgebreid duitstalig forum
- Engels op www.mbdev.net

PCB Demo

The screenshot displays the Eagle PCB design environment. On the left, a project tree shows the file structure for 'GPS 10MHz standaard'. The main workspace is divided into several panes:

- 1 Schematic:** Shows a high-level circuit diagram with components like 'MAIN CPU' and various interconnects.
- EAGLE Schematic:** A smaller window showing a zoomed-in view of the schematic.
- 2 Board:** Shows the physical PCB layout with components placed on a board, including a large display area and various electronic components.

At the bottom of the board view, there is a text prompt: "Click to add notes".

Sheet	Size	Description
Sheet 1	15.282 inch	MAIN CPU
Sheet 2	15.282 inch	Power
Sheet 3	15.282 inch	

Print maken

Nodig:

- Printmateriaal
- Laminator of Strijkbout
- Transfermateriaal
- Aceton
- Staalwol
- Handschoenen

Transfermateriaal

Papier

- Glad, vezelarm
- Dun
- Oplosbaar in water

Plastic

- Transparant overheadfolie
- Speciaal folie



100pcs PCB circuit board
thermal transfer paper, transfer
paper A4 size

Ort: Hongkong

RE-SUPPLY Item for "Starter kit"

PCB FAB -IN-A-BOX

TONER TRANSFER PAPER

PRODUCT CERTIFICATION
This product is certified to be suitable for use with all major brands of laser and inkjet printers and copiers. The product has been tested and approved for use with all major brands of laser and inkjet printers and copiers. The product is certified to be suitable for use with all major brands of laser and inkjet printers and copiers.

- Print only to the coated side (lighter blue shade)
- For Laser Printers and Photo Copiers ONLY!
- Handle by the edges to prevent fingerprints
- Keep paper sealed to prevent moisture loss
- See "www.pcbfx.com" for current instructions

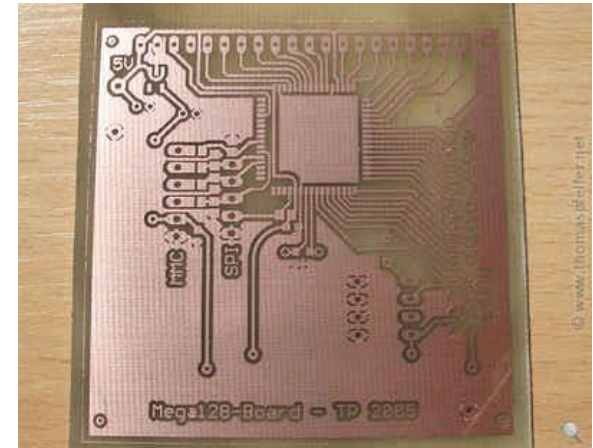
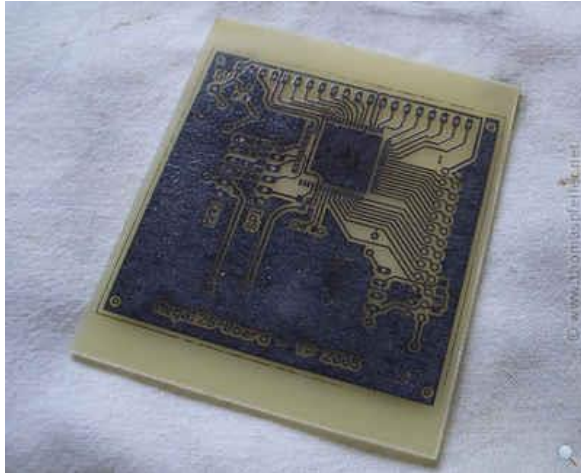
- **10 Sheets**
- **8-1/2" x 11"**
- **Resealable Package**

Pulsar
PROFESSIONAL fx

21 Carnegie Drive, Ocoeeville, FL 32707-2408
PHONE: (954) 320-2009 FAX: (954) 290-7570
www.PCBfx.com email:pulsar@pcbfx.com



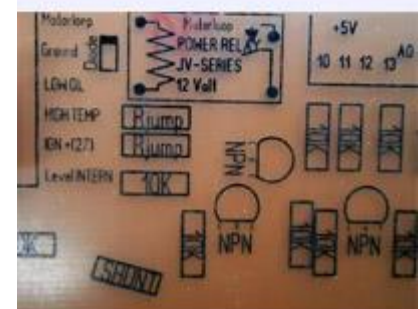
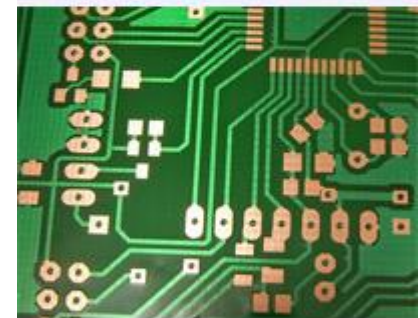
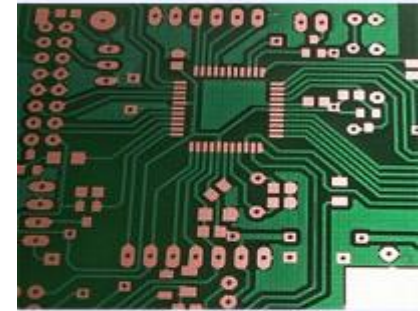
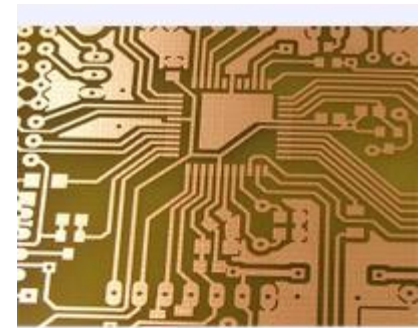
Tonertransfer



Afwerking

Bescherming tegen corrosie

- Lak, flux coatng
- Lötack SK 10
- Laminaat Dynamask
- Chemisch Tin





That's all Folks!